

**Lot #: CJH0222H2B**

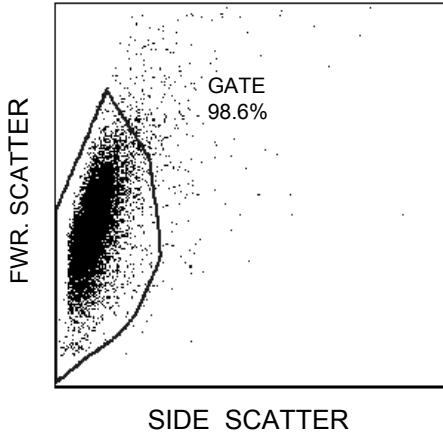
# CRISP HLA-B27 Lot Specificity Sheet

Part Numbers: CRHL-10, CRHL-30 & CRHL-100

These control cells are approximately 100% positive cells. See below for exact percentages.

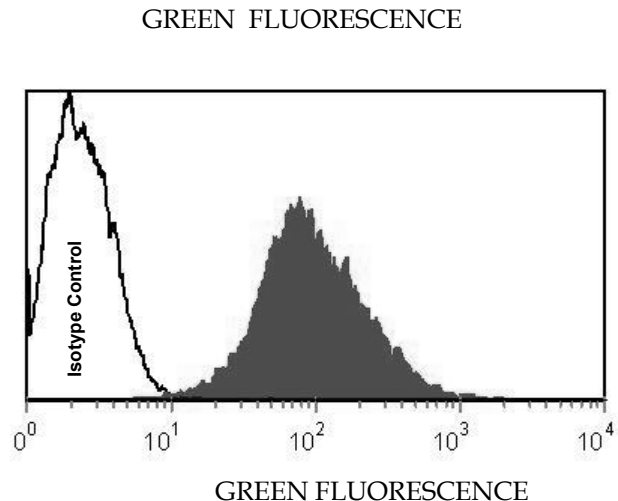
## Typical Scattergram and Histogram Data

Gating Setup for CRISP Cells



Range (mean $\pm$ 2 S.D.s)	
<b>Percent Positive</b>	<b>95% <math>\pm</math> 4.5%</b>
These ranges are based on a gated green fluorescence histogram of a minimum of 90% of all CRISP cells from the side vs. forward scatter histogram of the flow cytometer as illustrated above.	

Overlay of Crisp Control Cells stained with either isotype control or HLA-B27 antibody.



**Note:** The above results were obtained from the One Lambda directly conjugated fluoroscein HLA-B27 antibody run on a Becton Dickenson LSR flow cytometer. Different flow cytometers, different manufacturer's antibodies and even different lots of the same manufacturer's antibody will give slightly different results with the CRISP positive control cells. For this reason, PFS does not give mean values for the positive and negative peaks. However, with all good HLA-B27 antibodies, the percent positive control cells will remain constant and there will be a distinct separation between the negative and positive control cell peaks for the shelf life of this product (six months).

It is recommended that the mean fluorescent channel values and the percent positive ranges are calculated and established by QC testing within your laboratory.

**For Research  
Purposes Only**



**For Research  
Purposes Only**

6790 Top Gun St, #1, San Diego, CA, 92121  
(858) 453-5095 (800) 886-FLOW Fax (858) 453-2117 info@phoenixflow.com