

Lot #: CJH0225HIA2

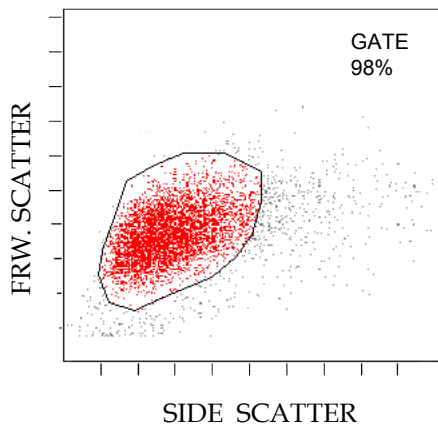
CRISP CD34 Lot Specificity Sheet

Part Numbers: CR34P-10, CR34P-30 & CR34P-100

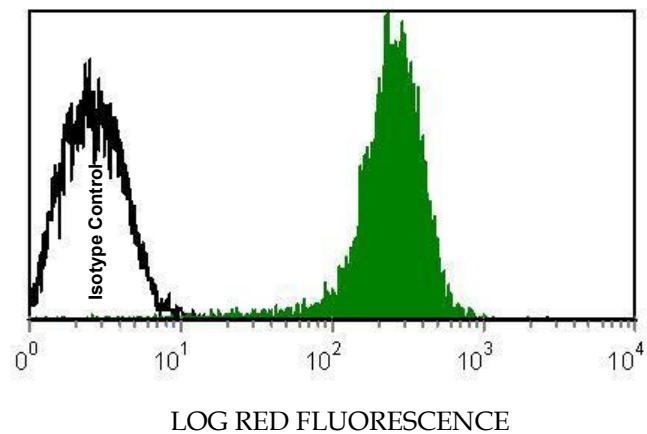
These are positive control cells. See below for exact percentages.

Typical Scattergram and Histogram Data

Gating Setup for CRISP Cells



Overlay of Crisp Control Cells stained with either isotype control or CD34 antibody.



Range (mean \pm 2 S.D.s)

Percent Positive 95% \pm 4.5%

These ranges are based on a gated red fluorescence histogram of a minimum of 90% of all CRISP cells from the side vs. forward scatter histogram of the flow cytometer as illustrated above.

Note: The above results were obtained from Immunotech directly conjugated phycoerytherin CD34 antibody and acquired on a Becton Dickinson LSR flow cytometer. Different manufacturer's flow cytometers, antibodies and even different lots of the same manufacturer's antibody may give slightly different results with the CRISP positive control cells. For this reason, the mean fluorescent channel values for the positive and negative peaks should be determined within your laboratory using your flow cytometer and your reagents. The percent positive control cells should remain constant and a distinct separation between the negative and positive control cell peaks should be consistent for the shelf life of this product (six months).

It is recommended that the mean fluorescent channel values and the percent positive ranges be calculated and established by QC testing within your laboratory.

**For Research
Purposes Only**

PHOENIX FLOW SYSTEMS

**For Research
Purposes Only**

6790 Top Gun St., #1, San Diego, CA, 92121
(858) 453-5095 (800) 886-FLOW Fax (858) 453-2117 info@phoenixflow.com