

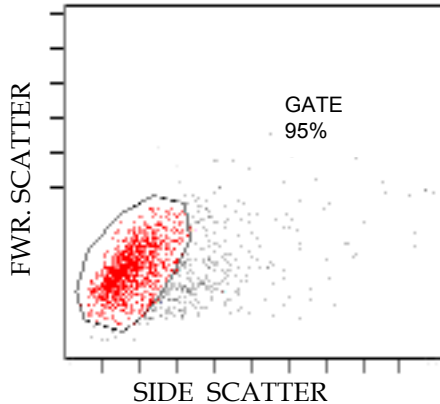
CRISP TdT Lot Specificity Sheet

Part Numbers: CRTDP-10, CRTDP-30 & CRTDP-100

These are positive control cells. See below for exact percentages.

Typical Cytogram and Histogram Data

Gating Setup for CRISP Cells

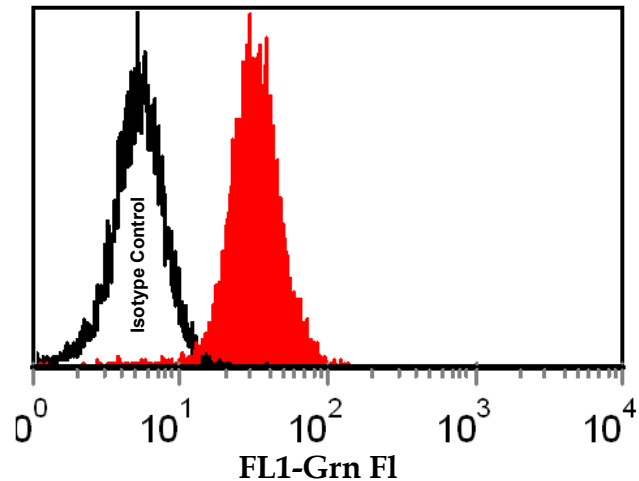


Range (mean \pm 2 S.D.s)

Percent Positive **95% \pm 4.5%**

These ranges are based on a gated green fluorescence histogram of a minimum of 90% of all CRISP cells from the side vs. forward scatter histogram of the flow cytometer as illustrated above.

Overlay of Crisp Control Cells stained with either isotype control or TdT anti-body.



Note: The above results were obtained from the SuperTech's directly conjugated fluoroscein TdT antibody run on a Becton Dickinson FACScan flow cytometer. Different manufacturer's flow cytometers, antibodies and even different lots of the same manufacturer's antibody may give slightly different results with the CRISP positive control cells. For this reason, the mean fluorescent channel values for the positive and negative peaks should be determined within your laboratory using your flow cytometer and your reagents. The percent positive control cells should remain constant for the shelf life of this product (four months).

It is recommended that the mean fluorescent channel values and the percent positive ranges are calculated and established by QC testing within your laboratory.

**For Research
Purposes Only**



**For Research
Purposes Only**

CRISP Control Cells

For Research Use Only

Intended Use:

CRISP control cells are used to assess the activity of specified monoclonal antibodies by flow cytometry.

Summary and Explanation:

CRISP control cells are stabilized preparations of human cell lines that exhibit surface antigens (intracellular TdT) detectable by immunophenotyping with specified antibodies.

These cells may be used in conjunction with antibodies to CD34, TdT or HLA-B27 as indicated by the product number:

Product Number:	Antigen	Number of Tests
CR34-10, or -30, or -100	CD34	10, 30, 100
CRTdP-10, or -30, or -100	TdT	10, 30, 100
CRHL-10, or -30, or -100	HLA-B27	10, 30 100

Reagents :

Vial containing 10 test (1.1 ml), 30 test (3.2 ml), or 100 test (10.5 ml) of stabilized control cells.

Statement of Warnings:

For Research Use Only.

DO NOT FREEZE THESE REAGENTS.

These cells should be handled under Biosafety Level 2 guidelines.

This reagent contains Sodium Azide. Azide compounds should be flushed with running water while being discarded. These precautions are recommended to avoid deposits in metal piping in which explosive conditions may develop. If skin or eye contact occur, wash extensively with running water.

Never pipette by mouth and avoid skin contact.

Expected Values:

See Lot specificity sheet.

Storage conditions:

Store at 2-8 C.

Staining Procedure:

1. Remove vial from the refrigerator and mix well.
2. Label two 12x75 mm test tubes appropriately; isotype ctl and positive ctl.
3. Using the lab's standard staining protocol, stain 100 μ l of CRISP cells with the specified amount of antibody recommended by the antibody manufacturer for 1×10^6 cells, or if using antibody in an amount different than recommended by the manufacturer adjust amount of cell suspension used accordingly.
The CRISP cells do not have to be washed before staining.
4. Analyze on a flow cytometer. Gate on the cell population and set cursors on 2-5% positive in the isotypic control.

Trademarks:

CRISP is a trademark of Phoenix Flow Systems, Inc..